



An All Volunteer - Nonprofit Organization

Heroes aren't born. They volunteer!

In the know:

October 19 - Radiation Basics

November 23 - Police Training Facility Tour

December 14 - Volunteer Recognition Lunch

SAFETY FACTS

- In the right conditions, a fire can double in size every 30 seconds.
- Nearly 30% of fires start in the kitchen because of open flames.

QUICK LINKS:

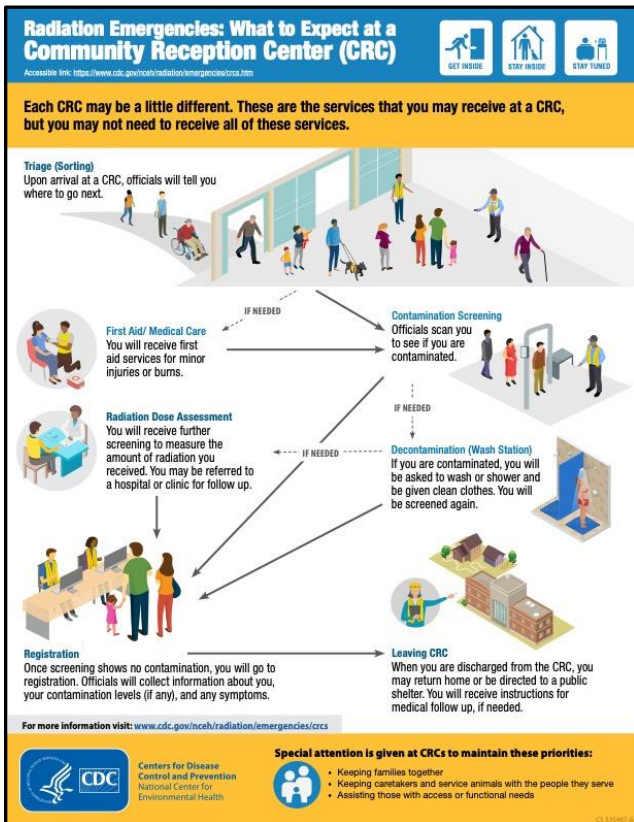
- [GNR Public Health](#)
- [Healthcare Coalition - Region D](#)
- [MRC GEM Full Schedule](#)
- [Alerts and Warnings](#)
- [National MRC](#)



MONTHLY MEETING – Radiation Basics

October 19, 2024
9:00am - 12:00noon

[Register Now!](#)



MRC GEM is world renowned for our CRC Startup Team. On October 19 you can come learn why some people traveled over 7,000 miles to see our team in action. Just as hurricanes may cause mass evacuations, a radiation incident would result in thousands fleeing the surrounding area. It is public health's responsibility to safely screen these people for exposure and contamination.

This month you can learn just what that would mean for our community and how MRC GEM would help. Our team is specially trained and equipped to safely assist in

setting up and operating a Community Reception Center (CRC) to help evacuees. Pictures and videos from MRC GEM's 2009 exercise with CDC are used extensively in their CRC materials. You can see more at <https://www.cdc.gov/radiation-emergencies/response/community-reception-centers.html>. Check out the video at <https://www.orau.gov/rsb/CRCoverviewVideo/> (13 minutes) to see many of your fellow MRC GEM volunteers.

DID YOU KNOW?

Fire Prevention Week theme, "Smoke alarms: Make them work for you!" include the following:

- Install smoke alarms in every bedroom, outside each separate sleeping area (like a hallway), and on each level (including the basement) of the home.
- Make sure smoke alarms meet the needs of all family members, including those with sensory or physical disabilities.
- Test smoke alarms at least once a month by pushing the test button.
- Replace all smoke alarms when they are 10 years old or don't respond when tested.

More info, fpw.org





WE NEED YOU!

We are looking for someone to help MRC GEM in the following areas:

Newsletter - looking for someone to take over the monthly newsletter - email Patty, patty@mrcgem.com for more info.

Community Outreach - looking for volunteers to help with community fairs and festivals (currently 4 a year - would not have to commit to all) - email Liza, yorkshirerose1461@gmail.com

For everything below, please email Jim, membership@mrcgem.com

Mail merge help - update the database by contacting members in the database

Photography - looking for someone to take pictures at monthly meetings and other events

Audio/Visual help - want someone to learn how to set up a/v at monthly meetings

Website help (WordPress experience helpful) - to help update and maintain our website

ANNUAL VOLUNTEER APPRECIATION LUNCHEON

A huge thank you to all our incredible volunteers and their families for joining us at this year's Volunteer Appreciation Picnic in September! It was a joy to honor each of you for your dedication and service. We shared great moments of fellowship and were honored to have Mark Reiswig, Director of Emergency Preparedness for GNR Public Health, deliver words of gratitude to our courageous volunteers. Your commitment makes a lasting impact on our community! [View photos from event!](#)

MRC GEM FESTIVAL SEASON 2024

Our first festival this year was the Public Service Festival at Cool Ray Field on September 7th. It was a very well attended and exciting event, and we were able to talk to lots of people about MRC GEM. Terry Eng (always a rock star volunteer!) and Liza ONeal worked the first shift, and Chau Nguyen and Tung Tran worked the second shift. Chau and Yung were volunteering for the first time and did simply a wonderful job talking to visitors about our organization!

Carmen Alonso and Liza ONeal were welcomed back to Georgia Gwinnett College on September 18th, for their annual Preparedness Festival, along with nineteen other preparedness groups. We were able to engage many college age students, who asked lots of questions (the whistles were a huge hit with this group!!). We spoke to Ashley Still (the organizer of the festival) about having the nursing students connect with MRC GEM as part of their program.

Our final festival of the year was the Peachtree Corners Festival. This is always a hugely popular event and was crowded on Saturday! Unfortunately, not many volunteers were able to help for the two-day festival. So, Carmen Alonso, Terry Eng, Sybil Ingram, Cindy S (Cindy did a great job at her very first MRC GEM festival!), and Liza ONeal shared the many hours of managing our booth over the two days of the event. However, Carmen clocked the most hours, always smiling and cheerfully greeting all comers! Despite the intense heat, everyone gave it their all and presented the best face of MRC GEM! We talked to so many people and gave out lots and lots of leaflets and whistles!! **Job well done everyone!**

Join the **MARTA Police Department** for the 2024 Full-Scale Exercise during the overnight hours of Saturday, November 9 through early morning Sunday, November 10. The exercise will focus on the response to an active assailant incident impacting Bus and Rail Operations. The exercise provides a no-fault learning environment to evaluate response plans and procedures.

MARTA 2024 Full-Scale Exercise

Date:	November 9 – November 10, 2024
Registration Time:	9:30 p.m. (Saturday)
Exercise Play Timeline:	11:00 p.m. – 3:00 a.m. (Sunday)
Locations:	H.E. Holmes Station and MARTA EOC
Registration Link:	https://www.ttemiprod.com/marta/
Refreshments:	Light meal provided to participants

Please join the MARTA Police Department for the 2024 Full-Scale Exercise during the overnight hours of Saturday, November 9 through early morning Sunday, November 10. The exercise will focus on the response to an active assailant incident impacting Bus and Rail Operations. The exercise provides a no-fault learning environment to evaluate response plans and procedures.

If you have any questions regarding the exercise and your participation, contact Emergency Preparedness Unit (EPU) Commander, Michael Polynice, at mpolynice@tsmarta.com. For assistance with registration, contact Liz Sullivan at liz.sullivan@tetratech.com.



Your Kroger Plus Card can help support our programs at no cost to you. Go to [Community Rewards](#) to enroll your card in support of MRC GEM. After registering your Kroger Plus Card, search for MRC GEM (org. #J1419) and select us as your supported organization. Once you do, Kroger will donate a percentage of what you spend to MRC GEM.



Support MRC GEM every time you shop. Donate spare change by automatically rounding up your orders to the nearest dollar at checkout. Go to [Walmart Spark Good](#) for more information and to enroll in the program.

