



In the know:

June 24 & 25 - Training Volunteer Summit

July 15 - Shelter Exercise

August 19 - What's in Your Preparedness Bag

September 10 - Annual Volunteer Picnic

October 21 - Strategic National Stockpile

An All Volunteer - Nonprofit Organization

Heroes aren't born. They volunteer!

Fun Fact

June 1 is the start of USA hurricane season

QUICK LINKS:

- [National Hurricane Center website](#)
- [GNR Public Health](#)
- [Healthcare Coalition - Region D](#)
- [MRC GEM](#)
- [Alerts and Warnings](#)
- [National MRC](#)



NREP 33

By R Michael Carter, MRC GEM CRC Lead



Demand for electrical power continues to soar as the population grows and electric devices become more prevalent. Conventional generation methods lag that rising need, and many entail undesirable environmental consequences. Currently, the USA has ninety-two active reactors that produce zero carbon output; one at Palisades is being refurbished; more of

various sizes are under development, especially in areas with higher population density. Safely managing these sites and their spent fuel is priority one, and is just one of the reasons the National Radiological Emergency Preparedness conference convenes annually; NREP 33 was held in Indianapolis the first week of April. [Read full article](#)

MRC Volunteer Core Competencies

The national MRC office recommends all volunteers be familiar with core competencies. These are aligned into four MRC Learning Paths: Volunteer Preparedness, Volunteer Response, Volunteer Leadership, and Volunteer Support for Community Resiliency. Providing a solid training foundation is essential in insuring volunteers are ready for potential deployments. The MRC Core Competencies serve as the national training standard for MRC volunteers and provide a "common language" to communicate volunteer capabilities with other MRC units and partner organizations.

While MRC GEM doesn't require volunteers to pursue the core competencies (just-in-time training suffices for many volunteer roles), we encourage our members to review and pursue as many of these as interest each individual. You can see more at <https://www.naccho.org/uploads/downloadable-resources/2019-MRC-Core-Competencies-and-Training-Plan.pdf>

DID YOU KNOW?

According to the DEA, Fentanyl kills more Americans than car accidents, cancer and Covid. That is nearly 200 Americans between the ages of 18 and 45 each day, with the number of children under 14 dying from fentanyl poisoning increasing alarmingly.

MRC GEM participates in community festivals throughout the year.



Pictured, Liza O'Neal and Gary Johnson

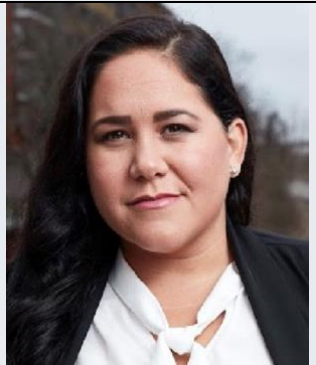
Gwinnett County Multicultural Festival held May 13, 2023

MRC GEM ADDS TO ITS BOARD OF DIRECTORS

We are thrilled to have two new board members join our organization. Please welcome Suleima Salgado, Health Consultant and Shameka Allen, Good Samaritan Health Centers of Gwinnett. Both incredible editions to the team! You can read more about them at the bottom of our "about us" section of our website.



Shameka Allen



Suleima Salgado

MRC GEM May Board Meeting



Annual Weekend Volunteer Training Summit

(members only)

June 24, 2023 - June 25, 2023

We respond to disasters, pandemics, and other emergencies, all situations where emotions run high. Conditions are ripe for overreaction. "Verbal Judo" and other de-escalation techniques are not only vital skills to have in a disaster situation, they can also be applied to your everyday life.

One of the top trainers from our very own Gwinnett County Police Department will teach us these essential skills, then give us the chance to practice them in simulated real-life situations.

Honoring President Jimmy Carter in our Community

One of our members, Patty Thumann recently attended a celebration for President Jimmy Carter honoring a lifetime achievement to his humanitarian work. It was hosted by Gateway85 Gwinnett CID. Many dignitaries spoke at this event, including Ambassador Andrew Young and our very own Louise Radloff to name a few.



[FIND A RESTAURANT SCORE](#)

Environmental Health inspection reports for facilities in Gwinnett, Newton and Rockdale counties.



Make sure to follow our social media handles below to stay involved in up to the minute happenings with our MRC GEM fellow members and activities as well as industry happenings in emergency planning and response.

