



**In the know:**

- March 18 - Emergency First Aid/Stop the Bleed
- April 15 - CPR / AED Training
- May 20 - PPE (Personal Protection Equipment)
- June 24 & 25 - Training Volunteer Summit
- July 15 - Shelter Exercise

**An All Volunteer - Nonprofit Organization**

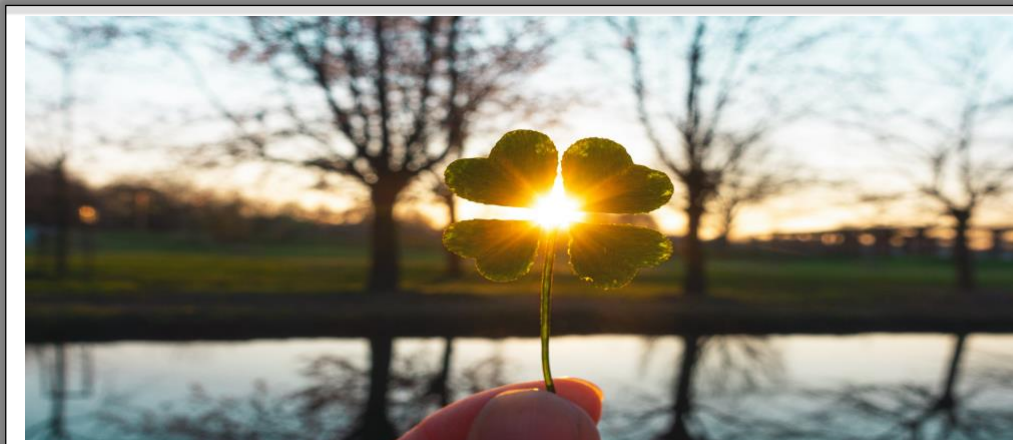
*Heroes aren't born. They volunteer!*

**DID YOU KNOW?**

- In one year alone, 436,000 Americans die from a cardiac arrest.
- More than 350,000 cardiac arrests occur outside of the hospital each year.

**QUICK LINKS:**

- [GNR Public Health](#)
- [Healthcare Coalition - Region D](#)
- [MRC GEM](#)
- [MRC GEM Calendar](#)
- [Alerts and Warnings](#)
- [National MRC](#)



**CHECK IT OUT....MRC GEM HAS A NEW WEBSITE**



**Being Prepared Strengthens Your Community**



**Be Prepared for Anything**

The next emergency is right around the corner. Don't be caught unprepared! With a wide variety of training that is provided at no cost for our members, you can be ready to give a helping hand when it is needed most.



**All Skills are Valuable**

The word "medical" may be in our name, but it doesn't have to be in your background to be a useful volunteer for our organization. Every emergency response situation requires a variety of skills to ensure that things run smoothly and effectively.



**Make an Impact**

We know that you won't be able to help with every event or incident that comes up, but we'll ensure that you can make an impact in the community by keeping you informed of volunteer opportunities as they arise. Then you can choose the ones that best fit your situation.

[Preparedness Information](#)

[View Training Areas](#)

**DID YOU KNOW?**

You can get lung cancer even if you've never smoked. Anyone can get lung cancer from breathing in high levels of radon over time. Radon is an odorless, invisible, radioactive gas and all outdoor and indoor air has some radon in it. It can build up in a home or building, whether it has a basement, is sealed or drafty, or is new or old, putting people at risk. Radon causes around 21,000 lung cancer deaths in the United States each year and is the leading environmental cause of cancer in the United States.

**Emergency First Aid/Stop the Bleed Training**

Saturday, March 18 | [REGISTER](#)



**Emergency Response Impact**

**\$1,000,000+**

Tax payer dollars saved through volunteers

**375,000**

COVID Vaccinations & Tests Administered

**17,256**

hours of COVID-19 response

## CULTURE AWARENESS TRAINING February Meeting



On Saturday, February 25, 2023, members of Gwinnett's Medical Reserve Corps (MRC-GEM) attended a workshop on cultural competence and its intersection with religion and healthcare presented by Gwinnett Cares and Westbridge Solutions. A panel of faith leaders, including Soumaya Khalifa (Executive Director of the Islamic Speakers Bureau), Dr. Elijah Nicholas (Dr. Elijah Nicholas Ministries), Venerable Thich Dao Tinh (Abbot of Truc Lam Boa Chi Zen Buddhist Temple) and Rabbi Yossi Lerman (Chabad Enrichment Center of Gwinnett) shared insights on how to better understand different religious beliefs and practices, recognize and challenge biases, and foster interfaith dialogue. Westbridge Solutions CEO, Berthine Crévecoeur West, led attendees through interactive exercises, discussions, and shared experiences, offering a deep dive into the importance of being culturally and religiously competent in today's diverse society and learned strategies to navigate diversity and build more inclusive healthcare environments. The importance of sensitivity to the needs of the LGBTQIA community was a valued part of the discussion. In the end, it was clear there really is more common ground than differences when it comes to caring for one another. The group was left with a great list of questions to ponder to keep the discussion going.

Additionally, Paige Havens, the Coalition's Health Equity Program Lead offered a presentation on the ongoing vaccine and health equity work taking place in our community as we strive to build immunity against COVID-19. 63% of Gwinnett's population is now fully vaccinated against COVID-19, but less than 10% have gotten the latest bivalent booster released in September. Havens stressed even though we are so COVID-fatigued, it is vital for us to continue to be vaccine influencers in our circles. She also shared, as time passes, we are learning more and more about how COVID is impacting the long-term health of our community. Long COVID is a fast-growing health concern impacting far more people in our community than we realize. She encouraged everyone to take time to learn more about Long COVID research initiatives and new Post COVID Care Centers in our area.

## MEMBER SPOTLIGHT

### Presenting at the Southwest Gwinnett Chamber of Commerce Event

Liza O'Neal and Carmen Stewart promoting our mission to businesses in the City of Peachtree Corners, City of Norcross and Berkeley Lake.



We would like to spotlight a member each month in our newsletter. [Tell us a little about yourself.](#)

### Disaster Response Via Cleantech

A nonprofit, is focused on providing solar energy for disaster response and helping communities rebuild with cleaner technologies. They have provided solar-powered electricity for communications, medical services, food, water and other critical needs to communities impacted by Hurricane Ida in Louisiana, tornadoes in Kentucky and earthquakes in Puerto Rico. The organization also helped power a COVID-19 clinic at the U.S./Mexico border and coordinated shipments of solar generators and other equipment to Ukraine. [Read more.](#)

