



An All Volunteer - Nonprofit Organization

Heroes aren't born. They volunteer!

FUN FACT

10th anniversary of Wireless Emergency Alerts! More than 70,000 alerts and warnings have been sent to cell phones and wireless devices.

QUICK LINKS:

- [National Hurricane Center](#)
- [Shelter Status](#)
- [GNR Health](#)
- [MRC GEM](#)
- [MRC GEM Calendar](#)
- [Alerts and Warnings](#)
- [National MRC](#)



MRC GEM IN OUR COMMUNITY

Peachtree Corners Festival

By Liza O'Neal, MRC GEM Outreach Lead



The outreach team is excited about having a booth at the Peachtree Corners Festival for the first time this year. The festival begins on Friday July 1st, with an outdoor evening concert, and on July 2nd and 3rd there will be arts and crafts, great food, live music, a car show, a children's area, free parking, AND an MRC GEM booth! *Please consider stopping by!*

Volunteers Responding to CBRNE



We had a great training day for our June 25 meeting on CBRNE (Chemical, Biological, Radiological, Nuclear, Explosion). A special thanks to **Kevin Caspary** for taking his Saturday to train our group.

We also gained some knowledge from having **Armin Ansari** and **Adela Salame-Alfie** both with the CDC also participate in this training. We

are looking forward to our July meeting where we have a full weekend summit with an exercise setting up CRC for emergency response.



In the know:

- July 16-17 - Annual Training Summit
- August 20 - Emergency Management
- September 18 - Annual Volunteer Picnic
- October 15 - To be determined
- November 19 - Opioid Crisis & Narcan Training
- December 10 - Annual Holiday Luncheon

DID YOU KNOW?

- New suicide hotline rolling out in July - you can now dial **988**
- Soon to be Covid PCR testing Kiosks in Gwinnett
- In Georgia, except for a few coastal counties, there are no "at risk registries"

State Operations Center

The State Operations Center (SOC) is a Multi-Agency Coordination Center (MACC) used by state, federal, local and volunteer agencies, as well as private sector organizations to respond to disasters or emergencies that require a coordinated state response. It also includes the state's 24-hour warning point. The SOC is organized using a combination of National Incident Management System (NIMS) Incident Command System (ICS) organizational components and the Emergency Support Function (ESF) structure prescribed by the National Response Framework (NRF). The organizational structure of the SOC consists of an Event Manager, command staff, general staff, and ESFs organized into functional branches.



Staff Development: Shifting the Focus to Personal Growth

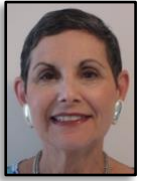
By Cor Consultants (MRC GEM members)

COR has been involved in staff resiliency for many years. Healthcare in particular poses a host of issues for staff to work through and for leadership to attend to...and that is during the best of times. Blend in a little pandemic, limited workforce, role change, and generally terrified and exhausted employees...and that can be a recipe for disaster. During the COVID response over the last several years, they have been guiding their clients on how to ensure that these hardworking employees feel valued.



MEMBER SPOTLIGHT

Judee Levinson is MRC GEM's Vice President-Logistics. Her specialties are refreshments, T-shirts, grant writing, and general nagging. She's a former Chicago Public School teacher, and a member of the Georgia Bar since 1987, having practiced law for nearly 30 years. Married to Sherwin for 50 years, a mom of two and "Gaga" of four.



We would like to spotlight a member each month in our newsletter. [Tell us a little about yourself.](#)

1. *Influence: Using your Power for Good to Build an Army.*
One of the greatest skills a leader can have is their ability to influence others. Influence is the key to leadership and can be used to help achieve organizational goals. As any good manager knows fellow influencers can be a huge asset to the team...and of course, also equally as destructive. Authentic authority is gained through credibility, consistency, and building relationships while working toward the common good. Influence is the most impactful when there is a true exchange between the involved parties that creates a coalition toward the cause.
2. *Teamwork: There is No "I" in Team-but Maybe There Should Be?*
3. *Attitude: A Little Thing That Makes a Big Difference-Winston Churchill*
4. *Leadership: Not Just for Folks with the Big Office.*

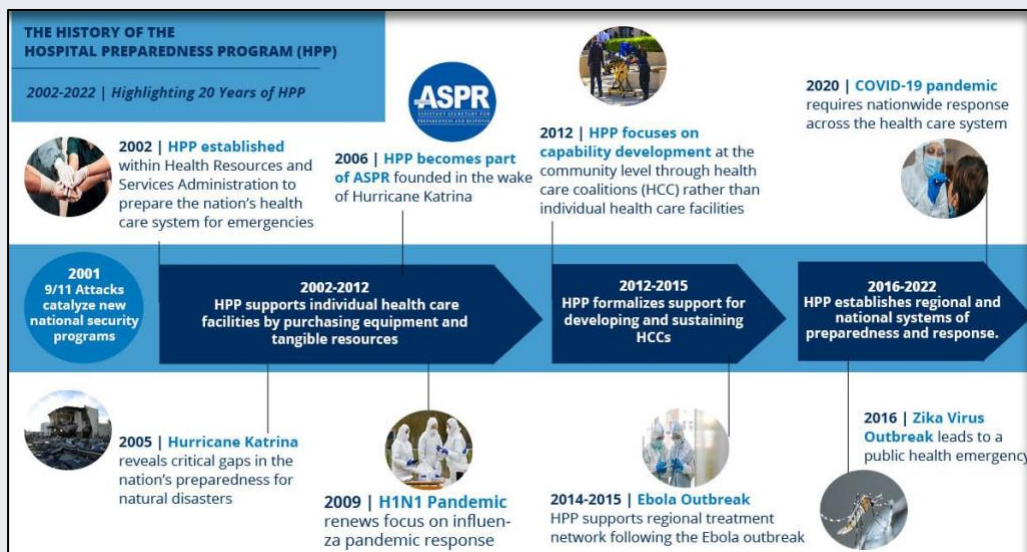
[Read the full article.](#)



Newly released **Healthier Homes** During [Epidemics white paper](#) describes strategies for protecting your household from infection.

HHS Office of the Assistant Secretary for Preparedness and Response (ASPR)

Over the past 20 years, ASPR'S Hospital Preparedness Program has evolved to better prepare the nation's health care system to save lives during disasters and emergencies. Check out the timeline below.



GNR Public Health is now the official name for the three-county public health district covering Gwinnett, Newton and Rockdale counties. "We felt now was an excellent time to create a more visually appealing and recognizable brand," said Dr. Audrey Arona, district health director of GNR Public Health. "Most importantly, we wanted to change our name to include 'public health' because our focus is indeed on our public. We've had an opportunity to educate our communities about what public health does, which goes beyond just the health department clinical services that are typically more visible."

CHECK OUT CAREERS NEEDING FILLED

GNR is looking for Customer Service Representatives and many other job functions

Follow us

